



wattson

YOUR PERSONAL ENERGY MONITOR

UK Product Range June 2012

wattson SOLAR Plus

The energy monitor that shows electricity generation, usage and net usage; Wattson Solar Plus maximises returns on your Solar PV by giving the green light to use your free electricity.

- Measures and displays both electricity generation and usage in the home or office.
- Glows green when more electricity is generated than used, showing when to use your own free electricity.
- Inverter independent, compatible with all inverter brands.
- Easifit option to remove the need for a Henley Block or junction box.
- Works with all solar, wind and hydroelectric 230 VAC generation systems.



- ABOVE AVERAGE USAGE
- YOUR AVERAGE USAGE
- BELOW AVERAGE USAGE
- EXPORTING ELECTRICITY



Encourages the entire household to take interest in saving electricity with its easy to read display and distinct colours.

Enables customers to make additional savings to electricity bills as well as maximising return on investment in Solar PV.

GLOWS GREEN
WHEN YOU HAVE
SPARE FREE
ELECTRICITY

Wattson Solar Plus measures both generation and usage so can show how much power is being imported from or exported to the Grid.

wattson Classic

The simple energy monitor helping you to understand and reduce your electricity usage.

- Changes colour based on your average electricity usage.
- The simplest way of understanding energy usage at home.
- Easy & safe to install, works within minutes.
- Helps you control your household energy bills.
- Helps you do your bit for the environment.



- BELOW YOUR AVERAGE
- YOUR AVERAGE
- ABOVE YOUR AVERAGE



Wattson helps you save money on your electricity bills.

It is the only personal energy monitor that encourages the whole family to take interest in saving electricity with its easy to read display and unique coloured light system. Wattson glows blue when you save money!

Wattson comes with software, Holmes, that lets you track your electricity spending and connects to an online community so you can share your data with your friends.

SAVE UP TO
25% ON YOUR
ELECTRICITY
BILL

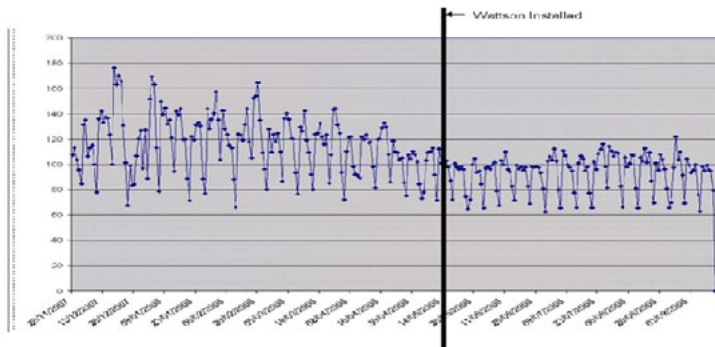
Wattson Classic owners report that they save on average 20% on their domestic electricity bills.

wattson XL

WattsonXL is a simple energy monitor for the public display of electricity usage in your business.

The display shows in simple cost and colours the electricity in use in the metered area. This helps staff to remember to do the right thing and to take ownership of the electricity in use in their workspace.

It forms part of the public face for "behind the scenes" activity, showing colleagues and customers that you are taking positive steps to decrease your carbon footprint.



This shows WattsonXL's calming and cost saving effect when installed in a bank branch office. WattsonXL can be part of a general staff awareness program in your business; it is also a successful information tool on its own, reducing the need for training or literature.

The display's onboard memory logs data every 5 minutes and can collect up to 28 days of data. This data can be downloaded to computer via USB using our own software, Holmes, to be examined or exported to CSV files. Alternatively the data stream can be integrated into existing data management systems or viewed with many open source wattson viewers.

WattsonXL can also show up to 11kW of generated power with the addition of a sensor clip.

The WattsonXL can be used to measure electricity for the whole building as it measures up to 46kW/200Amp per phase. Or it can be used to meter smaller areas, such as a particular floor or portion of the building, depending on wiring accessibility. Additional displays are available.



WattsonXL, save money on your business electricity bill and show the world you care.

wattson Professional

Wattson Professional is the new performance monitoring service for Solar PV systems. Web-based, it is the ideal tool for Solar PV installers to provide valuable on-going maintenance service to customers.

- Central browser-based management portal
- Clearly identifies downtime and inefficiencies
- SMS and e-mail notifications
- Generation data visualisation
- Dedicated customer view for generation and usage



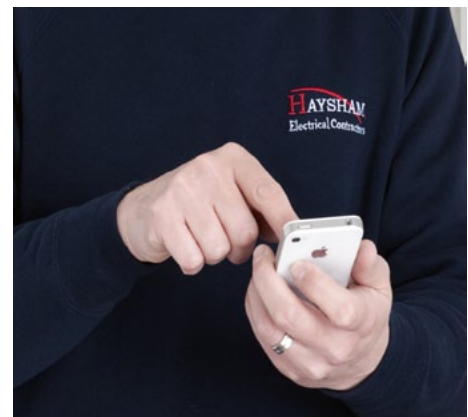
Wattson Professional continuously monitors and records energy generated from a Solar PV system, identifying any downtime and operating inefficiencies. It allows installers to specify alert conditions and preferred delivery method (SMS or email) when setting automatically generated alerts. Same day notification means the installer is aware of downtime before their customer and can provide appropriate maintenance support.

Wattson Professional enables account accessibility and management through a central web-based portal.



Customers can access their generation and usage data in a dedicated view.

An additional Wattson Display will add all the Wattson Solar Plus functionality to Wattson Professional.



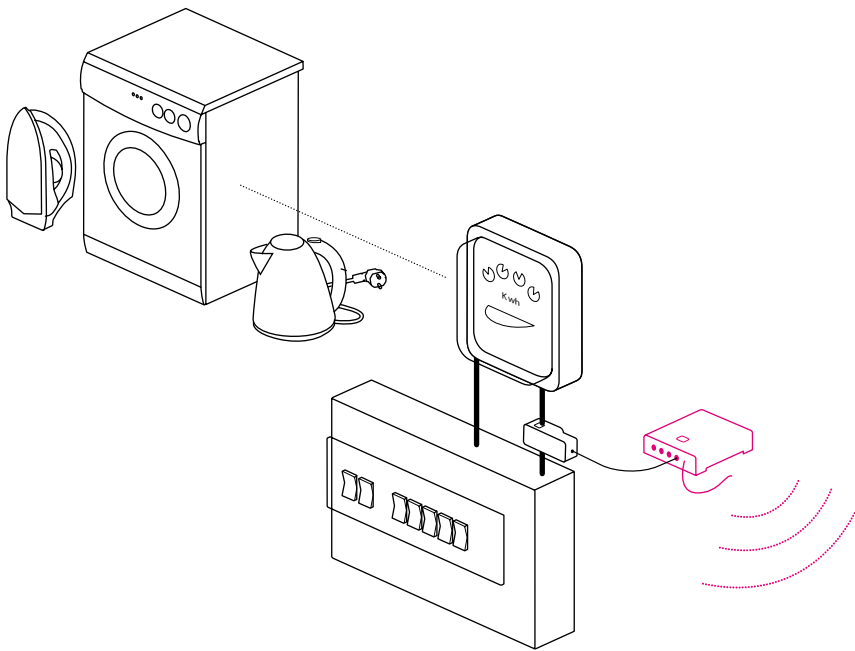
View installation base using the convenient dashboard and receive notifications by email or SMS when on the move.

HOW IT WORKS

Wattson measures the amount of electricity being used and generated in your home or office at any given time. It shows this value on an easy-to-read display in both numbers and colours.

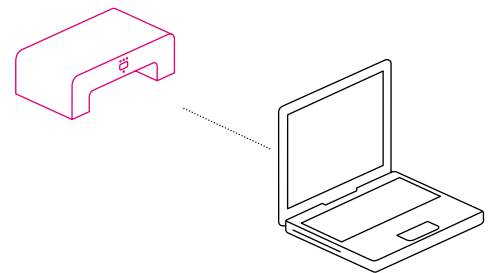
Wattson uses sensors that simply clip around the outside of electricity cables to get its power data. The data is then sent wirelessly from the transmitter to the display.

It works with 230V single phase or 415V three phase electricity supplies and uses flexible tariff structures to suit most pricing plans.



Wattson also works with Holmes, a simple piece of software for MAC or PC which helps you track your energy use and generation graphically. The system comes with pre-set electricity prices and they can be updated by the user. From Holmes your data can be exported to a CSV file, allowing you to analyse it any way you choose. This software can be quickly downloaded from our site www.wattsonsolar.com/holmes.

Further information, including manuals and downloads can be found in the Support section of our website www.wattsonsolar.com



WHAT IS EASIFIT?

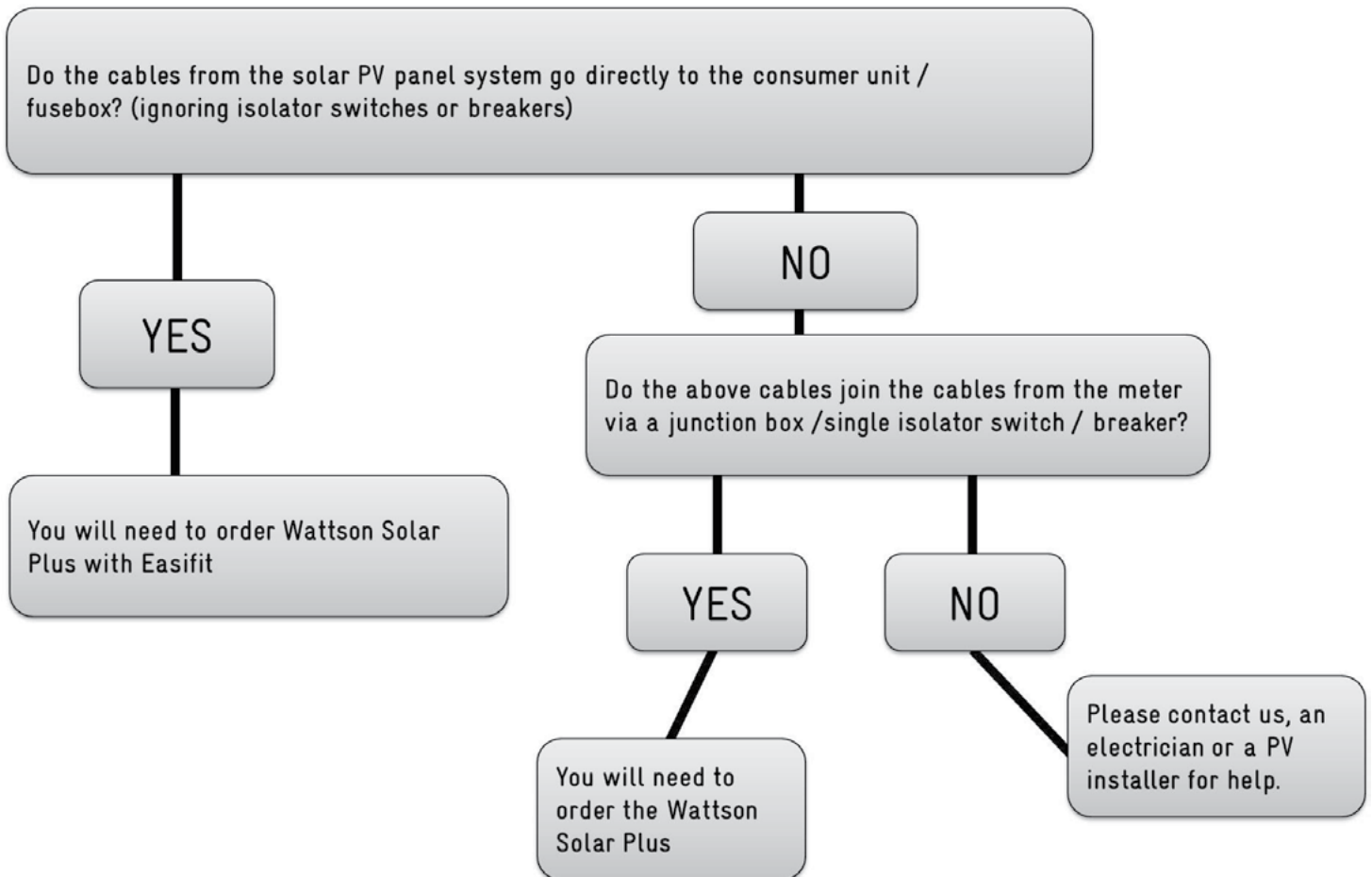
To read your usage correctly as well as your generation, Wattson needs to be able to measure electricity from your supply and electricity being exported.

Easifit includes a 50 Amp Sensor clip and Y-cable, a clever cable that nets out the usage from the generation. Easifit simplifies the installation of a Wattson as it removes the need for a Henley Block or junction box.



DO I NEED EASIFIT?

This series of questions should help you to understand whether to order Wattson Solar Plus or Wattson Solar Plus with Easifit for your customers.



Wattson Classic doesn't require an Easifit and can usually be installed by the end-user. This is because in the vast majority of homes, the single-core cables that the sensor fits around are easy to access coming out of the meter or going into the fuse board.

This is not the case for Wattson Solar Plus; although they will have access to the single-core cable for usage, it is unlikely an end-user will have ready access to a single-core cable for generation, and we always recommend they use their PV installer or an electrician.

ACCESSORIES

There is a range of Wattson accessories available to improve usability and reduce installation costs.

Easifit

Simplifies installation by removing need to install a Henley Block or junction box. Includes 1 x 50 Amp sensor clip, 1 x Y-cable and an installation guide.

TX for Wattson

Additional standard transmitter for Wattson. Ideal for systems with load coming off PV from main consumer unit. Includes 1 x standard transmitter and 1x DC power supply.

TXact

A more precise sensor and transmitter to provide near meter level accuracy for the generation reading. Can measure up to 3 phases of usage with additional 50 Amp sensor clips. Includes 1 x TXact transmitter and 1 x P-cable.

TXL

Additional transmitter for Wattson XL. Includes 1 x transmitter for XL, 3x200 Amp sensor clips and 1x DC power supply.

50 Amp Sensor Clips

Additional CT clips for three phase installations. Cable length is 0.75m.

3m extension cable

3 metre extension cables for when the sensor and transmitter are some distance apart.

Wattson Display

Display only, includes 1x DC power supply, 1 x USB cable, 1 x manual and quickstart guide.



COMPANY PROFILE

Energeno Ltd develops and supplies high-end energy monitoring solutions aimed at renewable energy generation.

Energeno manufactures and sells the Wattson range of premium energy monitors. Over 25,000 Wattsons have been sold around the globe in markets from Europe to Australasia.



TECHNICAL SPECIFICATIONS

FEATURES	WATTSON DISPLAYS		
	CLASSIC	XL	SOLAR PLUS
Phases measured	Single phase usage with extra clips required for twin and 3 phase	3 phase usage as standard plus single phase generation (extra 50Amp clip required)	Single phase generation and up to 3 phase usage (extra clips required for more than single phase).
Cable diameter	12.5mm	24 mm	12.5mm
Max power/current	11.5kW/50Amp	46kW/200Amp	11.5kW/50Amp
Resolution of display	1W	4W	1W
Digital display	14 – segment LED	14 – segment LED	14 – segment LED
Ambient light mode	RB LED	RB LED	RGB LED
Display log memory	28 days	28 days	28 days
Transmitter/receiver	433.92Mhz transmitter receiver, range approx. 100m in air & 30m in buildings	433.92Mhz transmitter receiver, range approx. 100m in air & 30m in buildings	433.92Mhz transmitter receiver, range approx. 100m in air & 30m in buildings
Max radiated power	2.26mW	2.26mW	2.26mW
Refresh rate	3 – 20 seconds, user changeable	3 – 20 seconds, user changeable	3-20 seconds, user changeable
Transmitter power	4 AA batteries (supplied) or DC power, available as accessory	4 AA batteries or DC power, both supplied	4 AA batteries or DC power, both supplied
USB	1.0 USB-A to USB mini-A cable supplied	1.0 USB-A to USB mini-A cable supplied	1.0 USB-A to USB mini-A cable supplied
Currency display	£, \$, €, R, P, k, F	£, \$, €, R, P, k, F	£, \$, €, R, P, k, F
Casing material	Polycarbonate, Polyvinyl and ABS	Polycarbonate, Polyvinyl and ABS	Polycarbonate, Polyvinyl and ABS
Display size (mm)	105 x 170 x 55	105 x 170 x 55	105 x 170 x 55
Transmitter size (mm)	110 x 84 x 26	110 x 84 x 26	110 x 84 x 26
Software compatible	Mac & PC	Mac & PC	Mac & PC
Packaged weight (kg)	1	1.45	1.15
Carton contents	12 units	9 units	12 units
Equipment compliance and conformity	EN 61558-1:2005 EN 300-220-2 V2.3.1 EN 301 489-1 V1.9.2 EN 61326-1:2006 EN 61326-2-2:2006 EN 61010-1:2010 CE RoHS WEEE R&TTE 1995/EC LVD 2006/95/EC EMC 2004/108/EC		

wattson

THE COMPLETE PRODUCT RANGE

WATTSON MONITOR RANGE

Wattson Solar Plus	WSP1-BAEN-UK WSP1-BAEN-EU WSP1-BAFR-EU
Wattson Solar Plus with Easifit	WSPE-EAEN-UK WSPE-EAEN-EU
Wattson Classic	WFP1-WHEN-UK WFP1-WHEN-EU WFP1-WHFR-EU WFP3-WHEN-EU WFP3-WHEN-CH
WattsonXL	W1XL-WHEN-UK W1XL-WHEN-EU W1XL-WHFR-EU

ACCESSORIES RANGE

Easifit	EFKT-BLEN
TXact	TXAC-BLEN
50 Amp Sensor Clip	CLP1-REDP-INDV CLIP1-REDP-BOXD
TX for Wattson	TXPS-BLEN-UK TXPS-BLEN-EU
TXL	TXL3-BLEN-UK TXL3-BLEN-EU
3m extension cable	EX3M-BLCK-W
DC Power Supply	PSU9-WHBL-UK PSU9-WHBL-EU
Wattson Display	WDIS-WHEN-UK WDIS-WHEN-EU



CONTACT INFO

Energeno Ltd
4th Floor
70-74 City Road
London
EC1Y 2BJ
www.energeno.com

sales@energeno.com
UK Sales: +44(0)203 286 0138
Int Sales: +44(0)203 286 0028

BPVA British
Photovoltaic
Association